

### RapidNet Pre-terminated Panel to Panel Set



RapidNet reduces the time it takes to install a patch panel by up to 75%, minimizing system downtime and business disruption during installation.

The RapidNet *Panel to Panel Set* is a completely pre-terminated panel to panel system in a box, providing an instant solution for disaster recovery situations. Each set consists of 6 bundled cables terminated with a 6 port patch panel cassette connected at each end. A variety of standard cable lengths are available and all are suitable for either temporary or permanent installations.

LSZH Category 6 UTP and LC Multimode or Singlemode Fibre RapidNet sets are also available, and to eliminate costly and time consuming testing on site, they are all Category 6 or OTDR tested and performance guaranteed before leaving HellermannTyton's factory.

In addition, a UTP Panel-to-RJ45 plug for direct input to active host equipment offers simple patching from the host to user patching frames.



### Features & Benefits

- Complete pre-terminated *panel to panel* system.
- Reduces *panel to panel* installation time by up to 75%.
- Easy to install - no special tools required.
- Variety of standard (bundled) cable lengths available.
- Category 6 or OTDR tested and performance guaranteed in line with ISO 11801 and EIA/TIA 568 Standards.
- Unique RapidNet cable management clips also available.

## Technical Information

RapidNet uses a Category 6 compliant 6-way cassette system that locks into one of four receptacle patch panel entry points, giving an industry standard 1U 24-port appearance when fully loaded. The connection is made by simply linking one panel to another and the service can then be patched in and connected.

Fibre is accommodated utilising the same hardware, but with six Duplex LC ports, offering a 12 way Multimode or Singlemode fibre as standard, presenting 48 fibres in a 1U space.

Standard Panel-to-Panel link lengths are available, including as short as 10 metres, and increasing in lengths of 2.5 metres to 25 metres. Bespoke lengths can be also be ordered.

## Packaging Dimensions:

Box height = 148mm    Box width = 500mm

## Product Codes

RN	O6	O8	O6	OCO	PP	'X' M	Code	Description
							'X' M	Length see below
							PP	Panel-to-Panel
							PPLUG	Panel-to-Plug (not Fibre)
							OCO	Office code
							O6	Category 6
							62.5/125	Multimode Fibre
							50/125	Multimode Fibre
							OM3	Multimode Fibre
							9/125	Singlemode Fibre
							O8	RJ45 UTP presentation
							LC	LC Fibre presentation
							O6	6 way cassette UTP
							12	12 way cassette Fibre
							RN	RapidNet series

### Standard Lengths

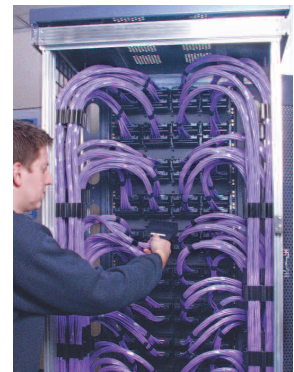
Panel-to-Panel UTP	10m, 12.5m, 15m, 17.5m, 20m, 22.5m and 25m
Panel-to-Plug UTP	5m, 7.5m, 10m, 12.5 and 15m
Panel-to-Panel Fibre	10m, 12.5m, 15m, 17.5m, 20m, 22.5m and 25m

### Custom Lengths

Panel-to-panel/Plug	Consult Sales Office for information.
---------------------	---------------------------------------

### 19" Patch Panel

RN2408-UL	1U Panel accepts 4 looms / cassettes of Category 6 or Fibre.
-----------	--



Network Sciences  
**HellermannTyton**